

# Navigating open source

Cheryl Hung, Director of Ecosystem, CNCF  
2019/4/20, TECH(K)NOW Day, Taipei

# Agenda

1. The numbers on open source
2. Case study: Kubernetes community and CNCF
3. How can you get involved?



# Cheryl Hung (@oicheryl)

Ex-Google software engineer, now I speak on Kubernetes, cloud native and open source.

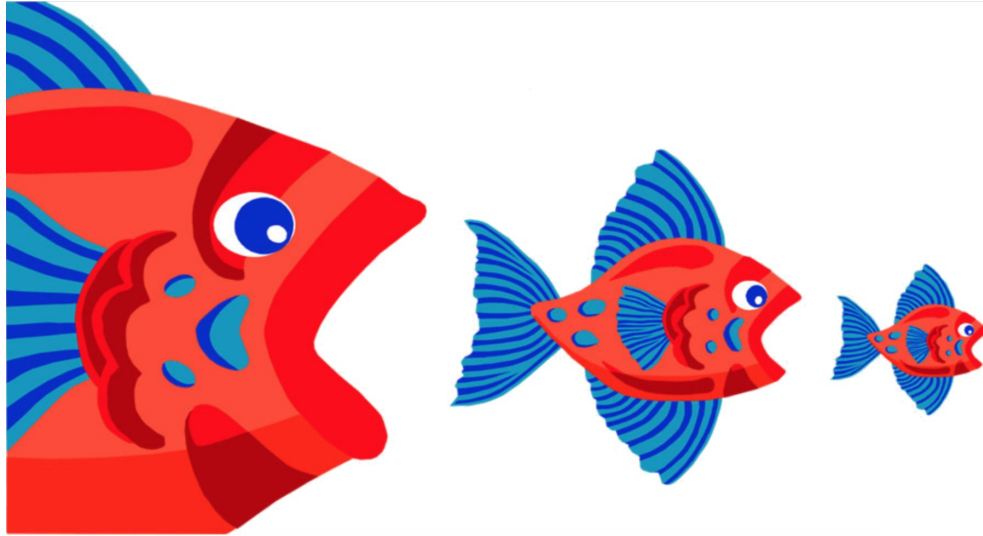
Founder of Cloud Native London.



# The numbers on open source



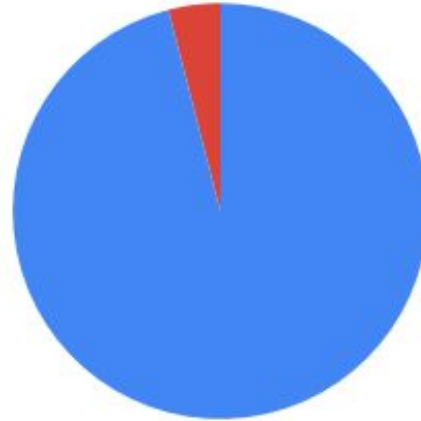
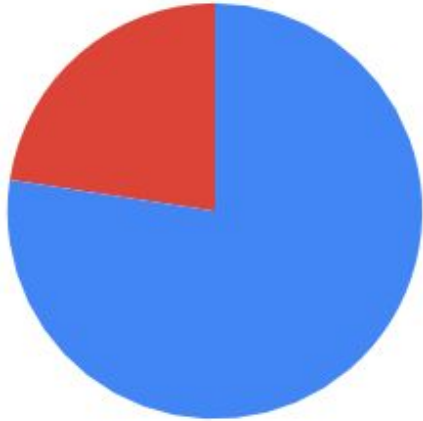
# Open source is eating the world



78% of companies **use** and 63% **participate** in open source.



# Diversity in open source is even worse than tech overall



Women vs men developers, professional US (23%)  
and open source globally (4%)



# Women are just as interested as men in contributing to open source, but are

2x

as likely to have a negative encounter

2x

as likely to seek help from people they already know



# Impact is both personal and universal

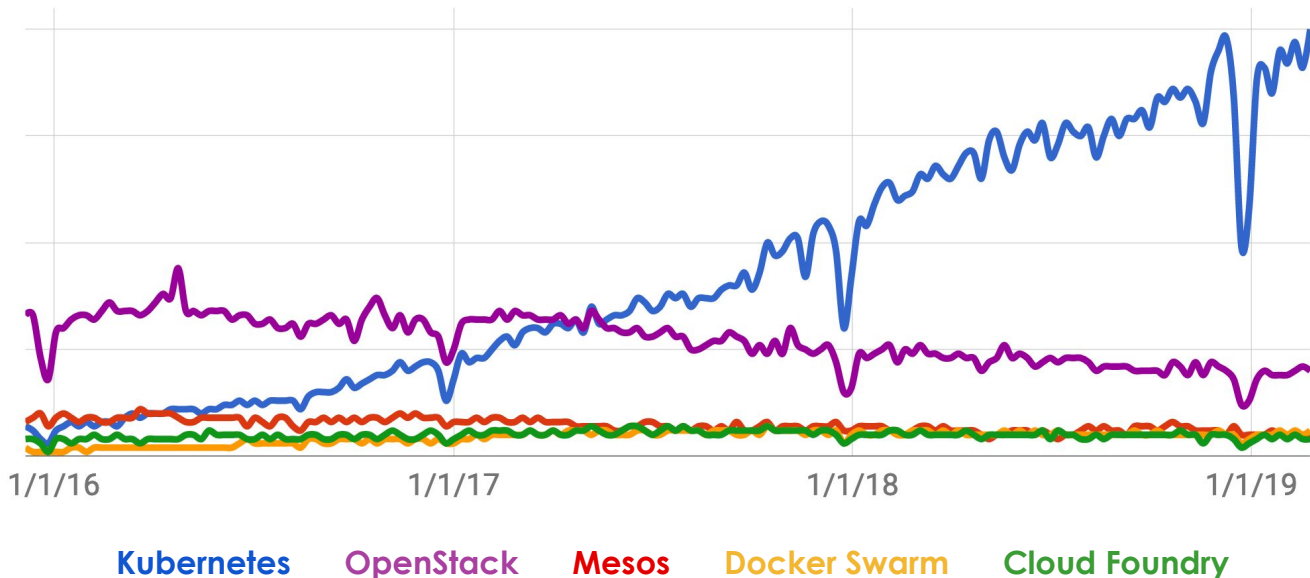
“Half of contributors say that their open source work... [helped] get their current role”



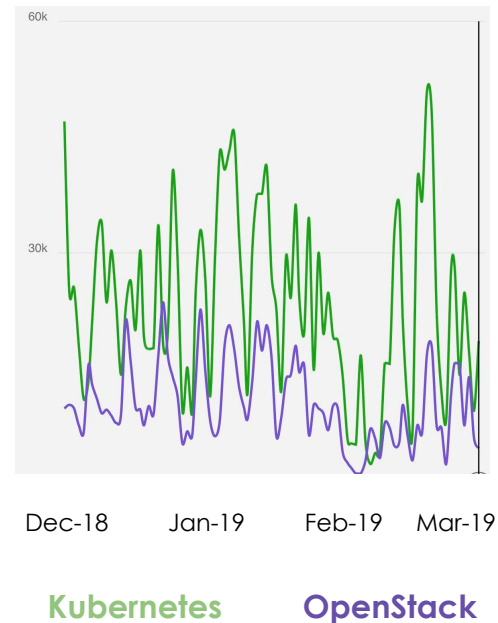
# Case study: Kubernetes community and CNCF

# Kubernetes in Search Trends

## Google Trends



## WeChat



# Github + Slack

 77,370 commits

 2,104 contributors

## #kubernetes-users

 |  61,804 |  6 |  Ne

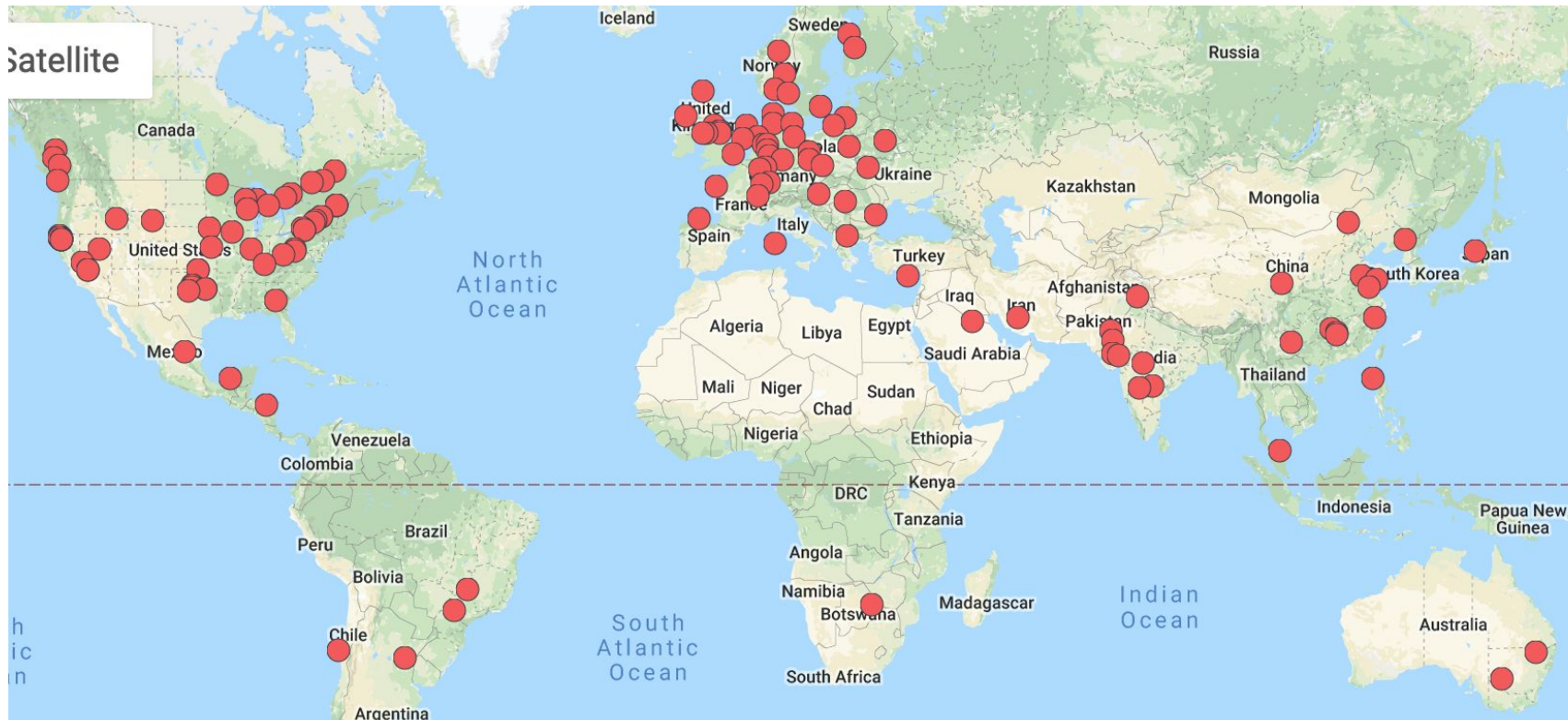
1,007 Open ✓ 44,832 Closed Author Projects Labels Milestones Reviews Assignee Sort

- kubelet: lookup node address for external provider if none is set** • area/cloudprovider area/kubelet  
cncf-cla: yes kind/feature priority/important-longterm release-note sig/node size/L  
#75229 opened 2 hours ago by andrewsykim
- Add metrics to monitor the kubelet http server** × area/kubelet cncf-cla: yes kind/feature  
needs-priority ok-to-test release-note-none sig/node size/L  
#75228 opened 2 hours ago by haiyanmeng
- apiserver log streaming & de-flake audit test** × cncf-cla: yes kind/feature kind/flake  
priority/important-soon release-note sig/api-machinery sig/auth sig/testing size/XL  
#75226 opened 2 hours ago by tallclair v1.15
- Add bracket to the sig-window tag** ✓ approved cncf-cla: yes kind/bug lgtm release-note-none  
sig/storage sig/windows size/XS  
#75225 opened 2 hours ago by jingxu97 v1.14
- kubeadm: print key inside the upload-certs phase of init** • approved area/kubeadm cncf-cla: yes  
do-not-merge/hold kind/bug lgtm priority/critical-urgent release-note-none sig/cluster-lifecycle size/S  
#75224 opened 2 hours ago by neollt123
- kubelet: include init containers when determining pod QoS** • cncf-cla: yes lgtm needs-kind  
needs-priority release-note sig/apps sig/node size/M  
#75223 opened 3 hours ago by sjenning
- Remove Istio manifests and configure-helper code** × cncf-cla: yes  
do-not-merge/cherry-pick-not-approved kind/cleanup needs-priority ok-to-test release-note-none  
sig/cluster-lifecycle size/XXL  
#75221 opened 3 hours ago by ostromart
- Fix the network policy tests.** • cncf-cla: yes do-not-merge/cherry-pick-not-approved  
do-not-merge/release-note-label-needed needs-kind needs-ok-to-test needs-priority sig/testing size/XS  
#75219 opened 4 hours ago by lzang

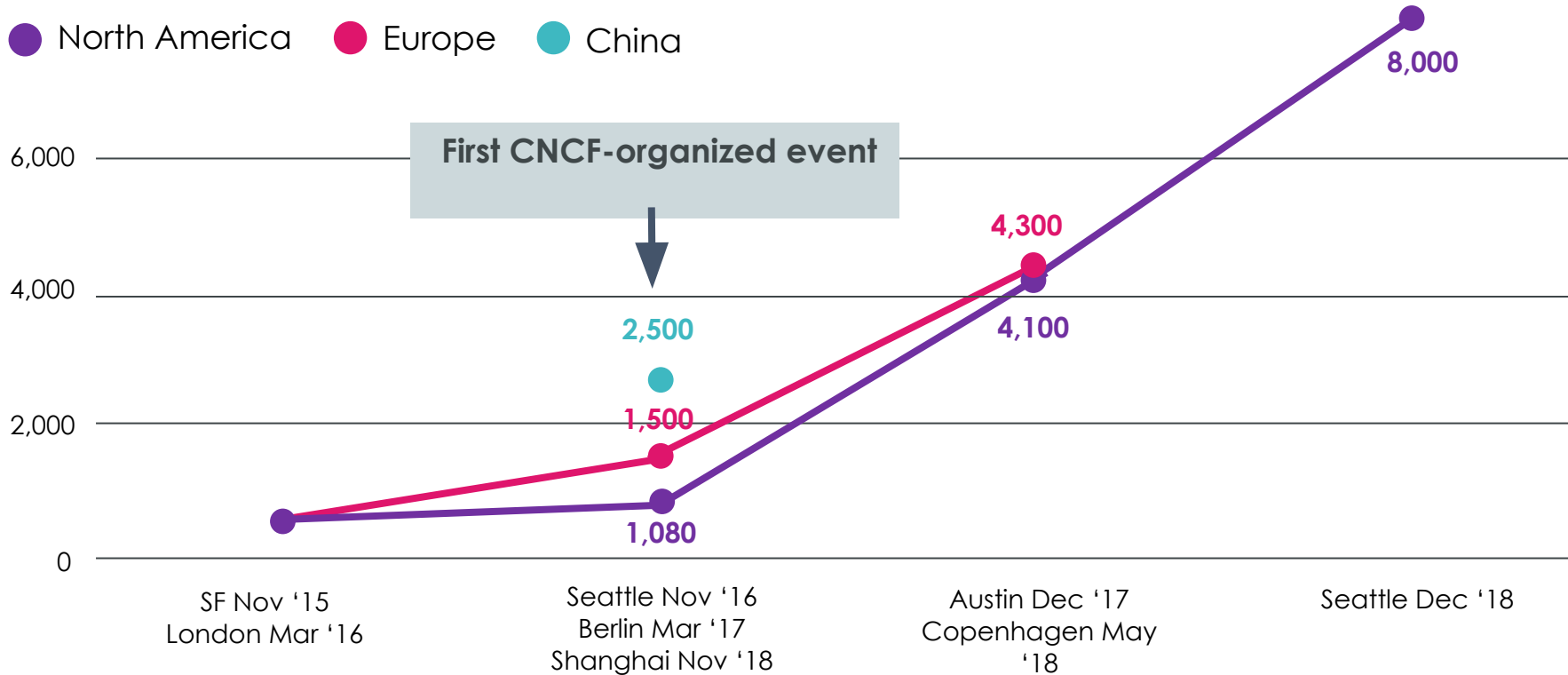




# Meetups in 48 countries, 106k members



# KubeCon + CloudNativeCon Attendance



# The mission of the CNCF is to foster and sustain open source projects around cloud native



kubernetes



Prometheus



envoy



CoreDNS



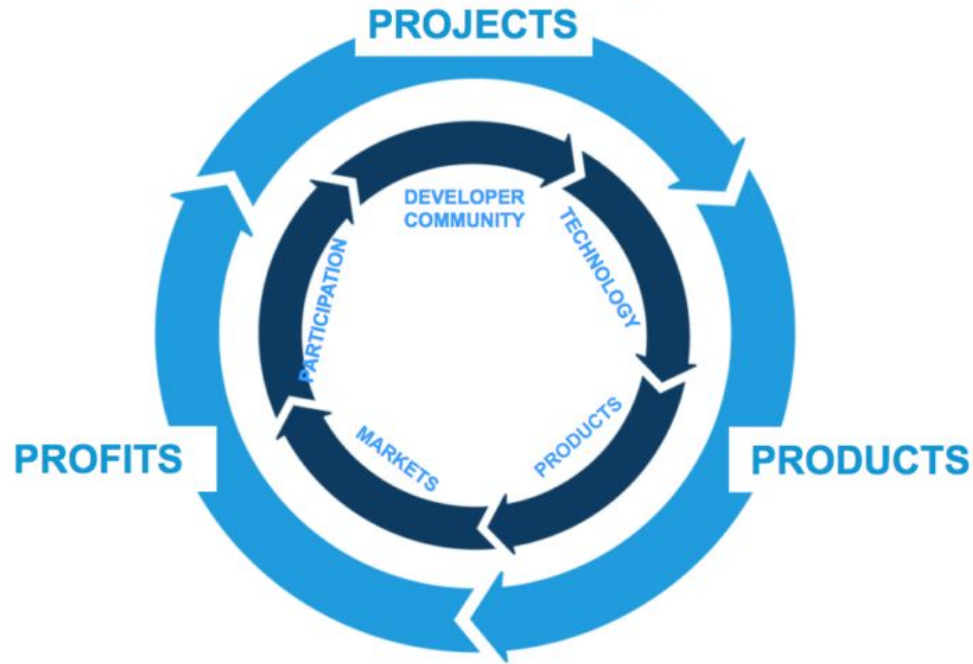
containerd



fluentd



# Non-profit, part of Linux Foundation, founded December 2015



# 375+ Members

## Platinum Members



## Gold Members



## End User Members



## End User Supporters



## Academic/Nonprofit



# 375+ Members (Silver 1)



# 375+ Members (Silver 2)



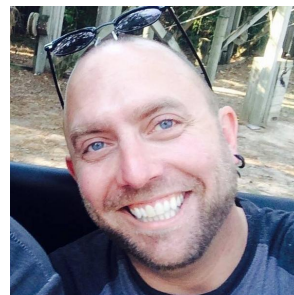
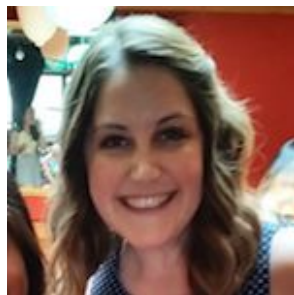


# In practice

- Community
- Documentation
- Translation
- Security audits
- Certification
- Legal
- Marketing & PR
- Events

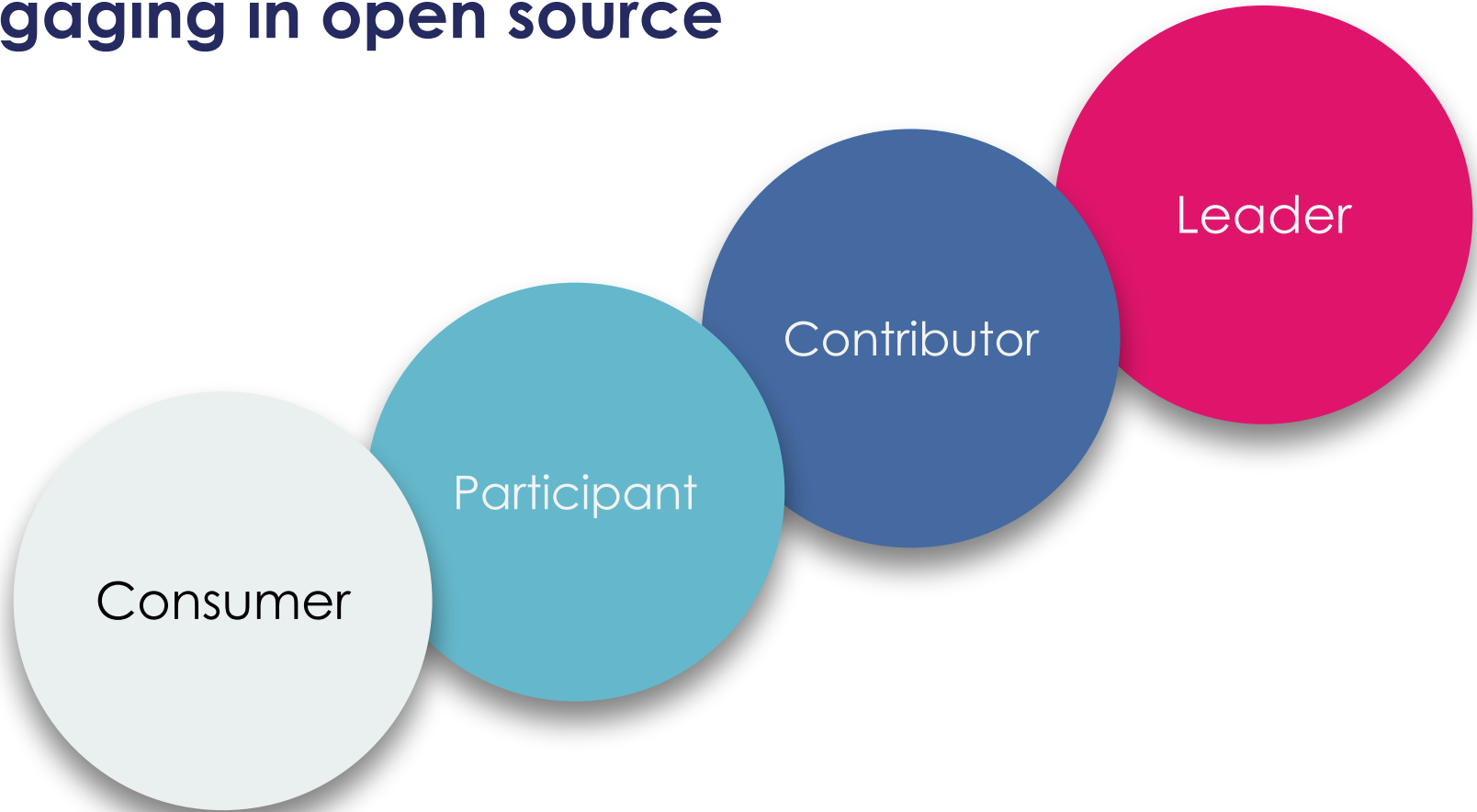


# 8 staff



How can you get involved?

# Engaging in open source





Consumer

Evaluate and use open source  
tools

File bug reports

Attend events





Participant

Speak at meetups

Run events

Answer others' questions

Moderate discussions

Curate





Contributor

Write and translate  
documentation

Improve user experience and  
design

Code and review code

Improve tooling and testing







Organize issues

Mentor others

Governance

Formalize open source at your  
company



# Challenges

- Many unspoken rules in open source
- High barrier to entry in large projects
- Very few independent maintainers (70% are employed)



# 1. Find an open source friendly employer



## 2. Find what you're good at, and specialize



### 3. Find a sponsor



# Summary

The impact of open source is both personal and universal.

Understand how you want to engage.

Find sponsors to help you with the unspoken rules.



# Resources

[opensesourcesurvey.org/2017](https://opensesourcesurvey.org/2017)

[opensource.guide](https://opensource.guide), [todogroup.org](https://todogroup.org),  
[chaoss.community](https://chaoss.community)

[github.com/cncf/contribute](https://github.com/cncf/contribute), [cncf.io/about/join](https://cncf.io/about/join)





Thanks!

Slides at [oicheryl.com](https://oicheryl.com)