

# Open Source for First Timers

Cheryl Hung, Director of Ecosystem, CNCF  
@oicheryl

# Cheryl Hung (@oicheryl)

Director of Ecosystem,  
Cloud Native Computing  
Foundation / Linux  
Foundation

Engineer at Google  
CS at Cambridge



# Agenda

1. How do you get into open source?
2. How do you get *paid* to work on open source?
3. What should you watch out for?

Not on the agenda: how to use git / Github



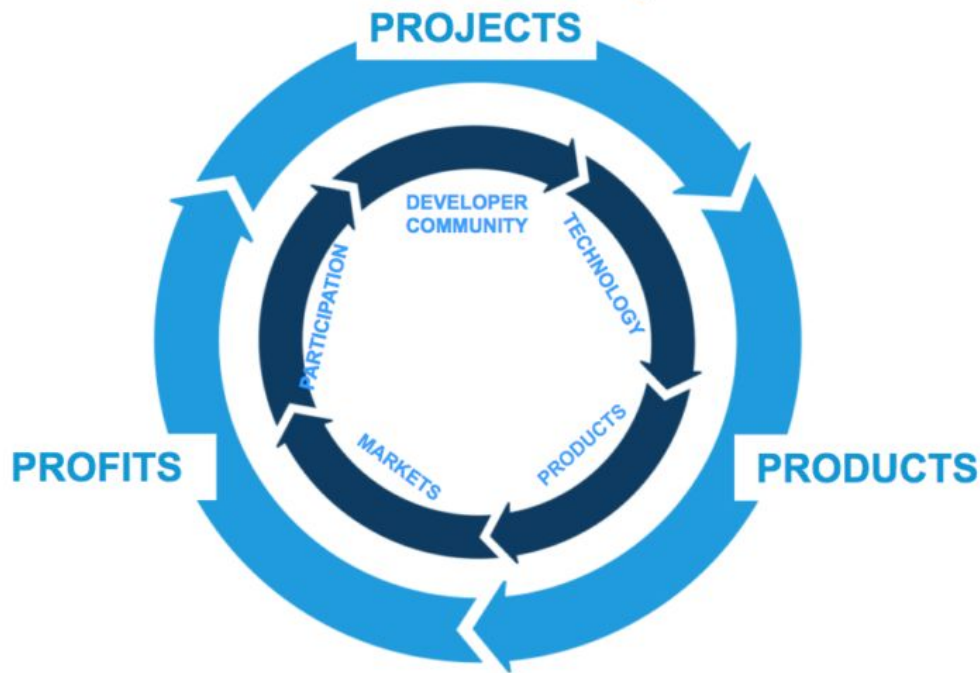
# What is open source software?

Software where source code is made freely available and may be redistributed and modified.

Contributing helps you improve your skills, grow your public reputation, and be part of a community.



# Linux Foundation model for sustainable open source



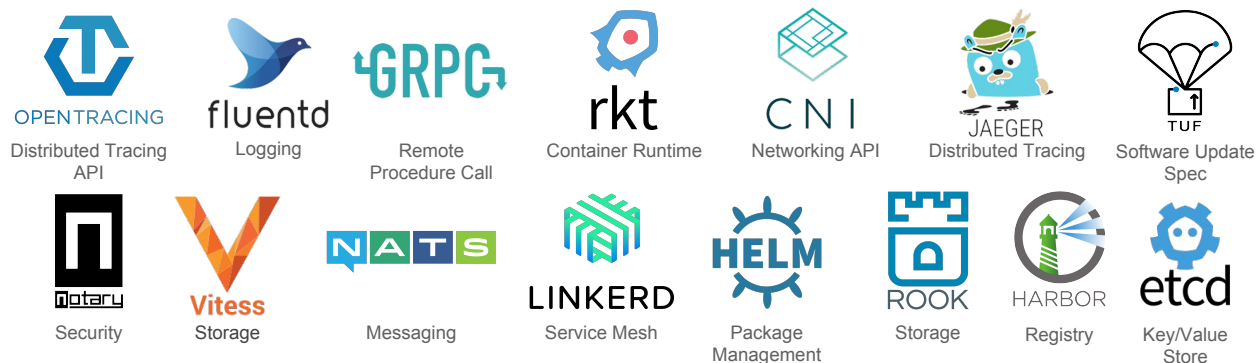
# Cloud Native Computing Foundation

- Nonprofit, part of the Linux Foundation; founded Dec 2015

## Graduated



## Incubating



- Platinum members:



# How do you get into open source?



**CLOUD NATIVE**  
COMPUTING FOUNDATION

# Unscientific poll - how did you get started?

“Meeting people in university lab/meetups/conferences/online...”

“When I switched employer”

“Needed somewhere to dump a personal project”





# Ways to contribute

- Run events
- Speak
- Help people
- Help people to code
- Design
- Code
- Write
- Organize

<https://opensource.guide/how-to-contribute/>



# Meetups - Cloud Native London



**Cloud Native Computing Foundation (CNCF)**  
46 countries • 177 groups • 99500 members



# Kubernetes Slack moderation

## #kubernetes-users



57,768



3

We apologize for the spammer attack tonight. If anyone finds spam messages we've missed in the cleanup, please notify [#slack-admins](#).



# Kubernetes pull requests

1,007 Open ✓ 44,832 Closed

Author ▾ Projects ▾ Labels ▾ Milestones ▾ Reviews ▾ Assignee ▾ Sort ▾

kubelet: lookup node address for external provider if none is set

area/cloudprovider

area/kubelet

cncf-cla: yes

kind/feature

priority/important-longterm

release-note

sig/node

size/L

#75229 opened 2 hours ago by andrewsykim

5

Add metrics to monitor the kubelet http server

area/kubelet

cncf-cla: yes

kind/feature

needs-priority

ok-to-test

release-note-none

sig/node

size/L

#75228 opened 2 hours ago by haiyanmeng

7

apiserver log streaming & de-flake audit test

cncf-cla: yes

kind/feature

kind/flake

priority/important-soon

release-note

sig/api-machinery

sig/auth

sig/testing

size/XL

#75226 opened 2 hours ago by tallclair v1.15

3

Add bracket to the sig-window tag

approved

cncf-cla: yes

kind/bug

lgtn

release-note-none

sig/storage

sig/windows

size/XS

#75225 opened 2 hours ago by jingxu97 v1.14

3

kubeadm: print key inside the upload-certs phase of init

approved

area/kubeadm

cncf-cla: yes

do-not-merge/hold

kind/bug

lgtn

priority/critical-urgent

release-note-none

sig/cluster-lifecycle

size/S

#75224 opened 2 hours ago by neolit123

3

kubelet: include init containers when determining pod QoS

cncf-cla: yes

lgtn

needs-kind

needs-priority

release-note

sig/apps

sig/node

size/M

#75223 opened 3 hours ago by sjenning

2

Remove Istio manifests and configure-helper code

cncf-cla: yes

do-not-merge/cherry-pick-not-approved

kind/cleanup

needs-priority

ok-to-test

release-note-none

sig/cluster-lifecycle

size/XXL

#75221 opened 3 hours ago by ostromart

7

Fix the network policy tests.

cncf-cla: yes

do-not-merge/cherry-pick-not-approved

do-not-merge/release-note-label-needed

needs-kind

needs-ok-to-test

needs-priority

sig/testing

size/XS

#75219 opened 4 hours ago by lizang

4



# Find your speciality - then do more of it



# Building your career in tech

Exploit 1-2 dimensions, explore 1-2.

Role

Communication  
methods

Technology

Domain

<https://medium.com/@gwenshapira/building-a-career-exploring-vs-exploiting-eee071408c24>



How do you paid to work on  
open source?

# Understand the incentives

1. Building company brand
2. Recruiting
3. Open source projects in line with company strategy





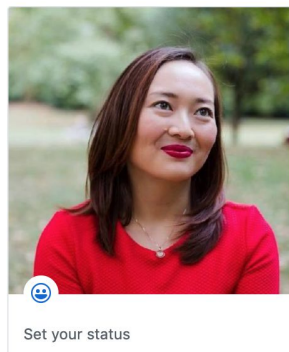
# If your company doesn't support OS contributions

- Go elsewhere
- Crowdfunding, sponsorship or grants
- Start your own company

<https://opensource.guide/getting-paid/>



# Be visible!



Set your status

**Cheryl Hung**

oicheryl

Director of Ecosystem at  
**@linuxfoundation**  
**@CloudNativeFd**. Xogler engineer,  
founder of the #CloudNativeLon  
meetup.

**@cncf**

London, UK

<http://www.oicheryl.com>

Edit

Overview

Repositories 5

Projects 0

Stars 2

Followers 10

Following 0

## Pinned repositories

Customize your pinned repositories

[oicheryl.github.io](https://oicheryl.github.io)

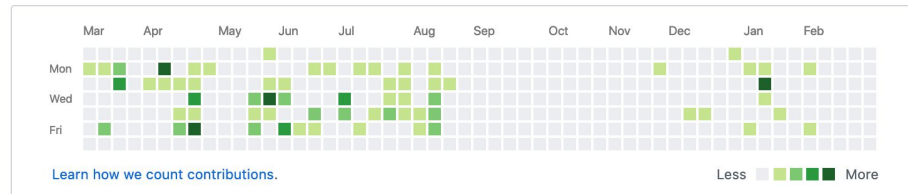
Forked from barryclark/jekyll-now

Source code for oicheryl.com

CSS 1

## 217 contributions in the last year

Contribution settings ▾



## Contribution activity

Jump to ▾

2019

2018

2017

March 2019

oicheryl has no activity yet for this period.

February 2019



# What should you watch out for?

# Pitfalls

- A lot of unspoken rules in open source and on Github
- High barrier to entry and inertia in large projects
- Very few independent maintainers



# Solution: Find a sponsor



[https://inclusion.slac.stanford.edu/sites/inclusion.slac.stanford.edu/files/The\\_Key\\_Role\\_of\\_a\\_Sponsorship\\_for\\_Diverse\\_Talent.pdf](https://inclusion.slac.stanford.edu/sites/inclusion.slac.stanford.edu/files/The_Key_Role_of_a_Sponsorship_for_Diverse_Talent.pdf)



# Summary

- Contribute in ways you are strong at.
- Every community has unspoken rules. Find someone to help you navigate them!



# Thanks!

Slides at [oicheryl.com](https://oicheryl.com)



**CLOUD NATIVE**  
COMPUTING FOUNDATION